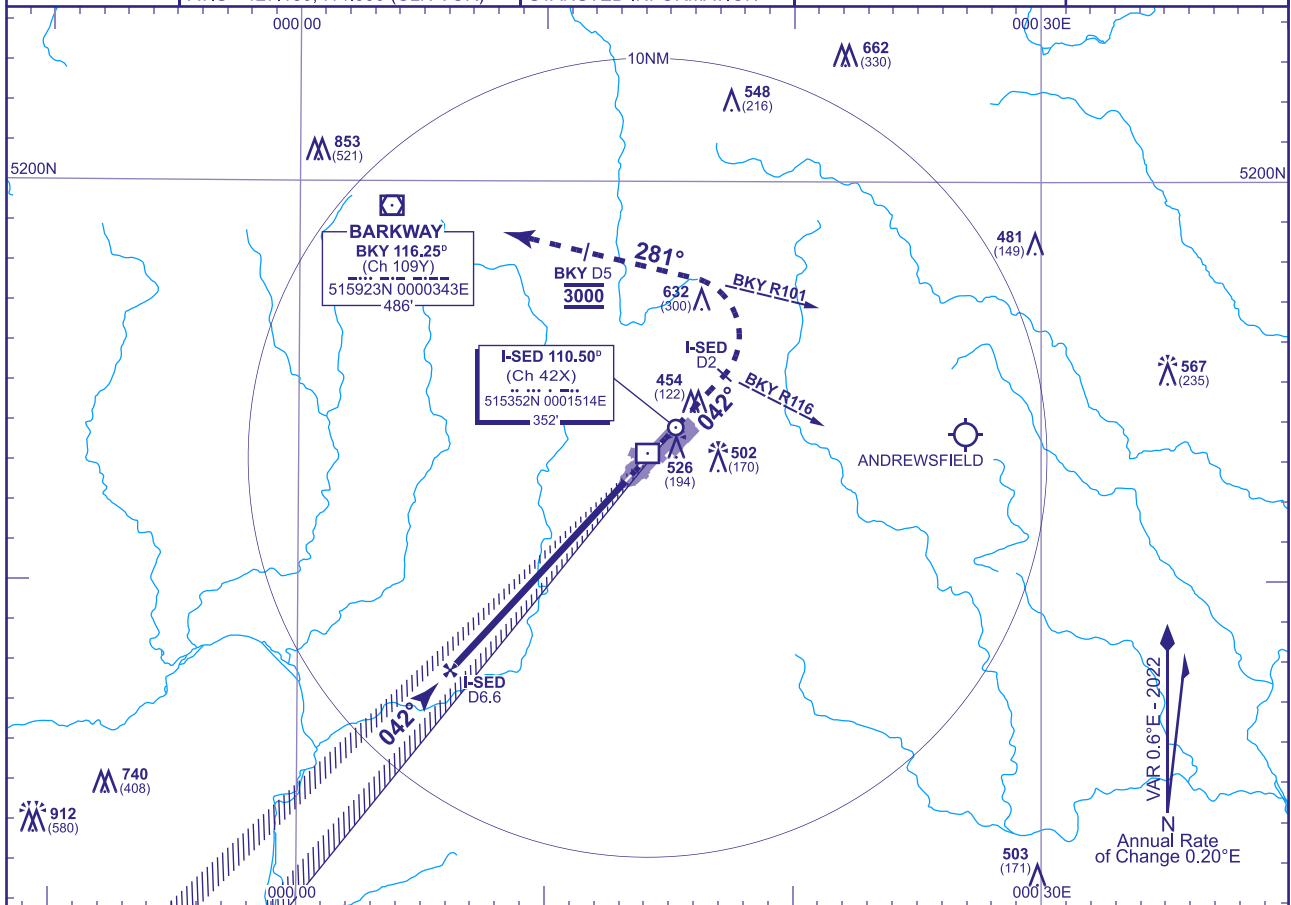


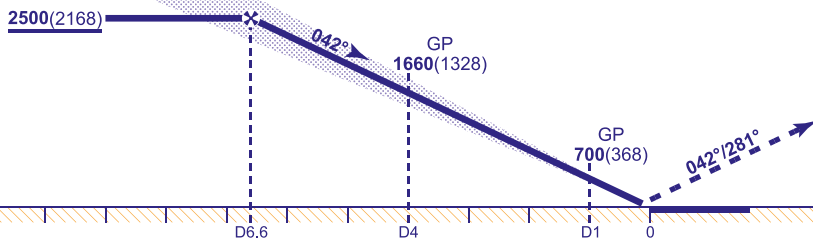
(ACFT CAT A,B,C,D)



RECOMMENDED PROFILE GLIDE PATH 3°, 320FT/NM

DME I-SED	6	5	4	3	2	1
ALT(HGT)	2300(1968)	1980(1648)	1660(1328)	1340(1008)	1020(688)	700(368)

RDH 53



Climb straight ahead **not above 3000**.  
At I-SED DME 2 (VOR BKY R116)  
turn left to establish on VOR BKY R101  
(QDM 281°). Cross BKY DME 5 at  
**3000\*** then continue to **BKY VOR** at  
**3000** or as directed.  
\* Missed approach climb gradient of  
4.9% may be required to ensure CAS  
containment.

Aircraft Category		A	B	C	D	Rate of descent	G/S KT	160	140	120	100	80
OCA (OCH)	CAT I	482(150)	495(163)	509(177)	525(193)		FT/MIN	850	740	640	530	420
	CAT II	388(56)	400(68)	413(81)	430(98)							
VM(C)OCA (OCH AAL)	Total Area	900(552)	900(552)	1030(682)	1040(692)							

**AIRCRAFT UNABLE TO RECEIVE DME I-SED**

Advise ATC. Radar range will be provided at 4NM inbound.

AIRCRAFT UNABLE TO RECEIVE VOR DME BKY

AIRCRAFT UNABLE TO RECEIVE VOR DME BRT  
Advise ATC. Radar direction will be passed for missed approach procedure.

**NOTE 1** For initial approaches see AD 2-EGSS-7-16.

2 MAX 185KIAS for MAP until established on BKY R101.

**CHANGE (2/25):** PANSHANGER DISUSED AD REMOVED.

AERO INFO DATE 25 NOV 24

AD 2-EGSS-8-1